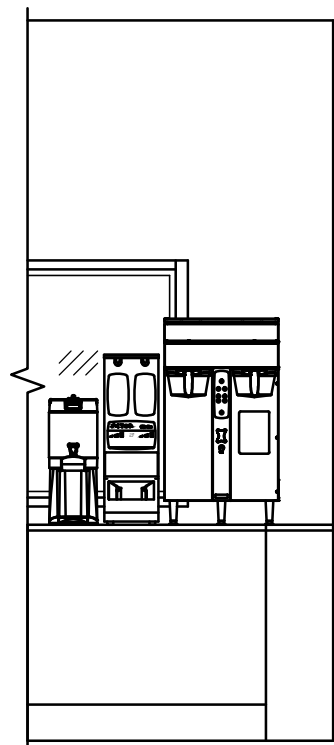
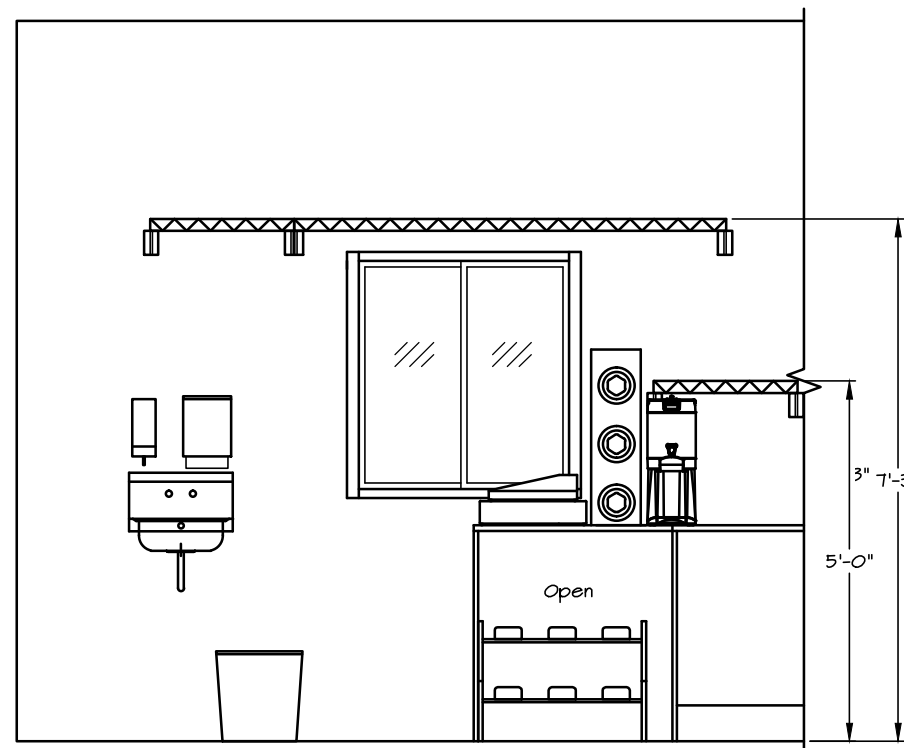


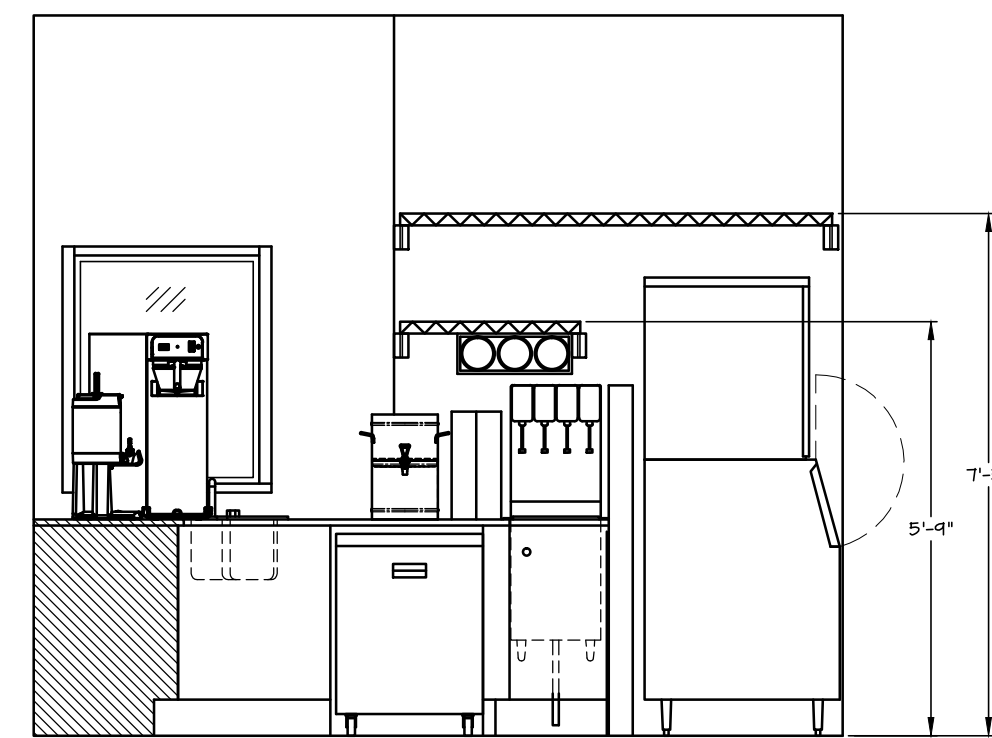
A ELEVATION SCALE: 3/8"=1'-0"



B ELEVATION SCALE: 3/8"=1'-0"



C ELEVATION SCALE: 3/8"=1'-0"



D ELEVATION SCALE: 3/8"=1'-0"

GENERAL NOTES:

- IF BUREAUCRATIC CODES DIFFER FROM WHAT IS SHOWN ON THIS DRAWING, CODES SHALL TAKE PRECEDENCE.
- WHERE EVER WALL MOUNTED SHELVES ARE TO BE ATTACHED TO WALLS, A 3/4" PIECE OF PLYWOOD OR OSB SHOULD BE INSET INTO WALL STUDS UNDER THE FINISHED WALL SURFACE TO PROVIDE SECURE ANCHOR FOR SHELF MOUNTING. INSET PLYWOOD OR OSB SHOULD BE 24" WIDE, WITH 4" EXTENDING ABOVE THE INDICATED HEIGHT OF SHELF MOUNT, AND THE REMAINING 20" BELOW THAT HEIGHT. LENGTH OF INSET SHOULD EXTEND 6" BEYOND EACH END OF THE SHELF. BE AWARE THAT THESE SHELVES MAY CARRY SIGNIFICANT WEIGHT.
- PROJECT ARCHITECT TO MAKE ALL DECISIONS RELATED TO:
 - GENERAL AREA LIGHTING
 - HVAC
 - LIGHTED SIGNS
 - GENERAL PURPOSE CONVENIENCE OUTLETS
 - BATHROOM FIXTURES
 - BUILDING CONSTRUCTION SPECIFICATIONS, MATERIALS, ETC.
- ALL EQUIPMENT & FIXTURE DIMENSIONS, ELECTRICAL SPECIFICATIONS, AND PLUMBING SPECIFICATIONS ARE BASED UPON THE EQUIPMENT SPECIFIED ON THESE DRAWINGS. IF EQUIPMENT MAKES/MODELS CHANGE, BE SURE TO ADJUST ACCORDINGLY ON ALL DRAWINGS.

Disclaimer

This drawing been created for the purpose of suggesting equipment placement to promote efficient operational flow. It may pass all codes & requirements for your local / state bureaucracies, however, the creator of this drawing cannot, and is not, guaranteeing that it will. Different cities / counties / states may have specific requirements which may not be addressed on this drawing. It is your responsibility to make sure that the features on this drawing are acceptable with your local bureaucracies before beginning construction. If codes require features different than what has been indicated on this drawing, codes shall take precedence over this drawing. This drawing is intended to be a rough planning guide for your architect &/or construction professional. Ed Arvidson shall be held harmless from any expenses / damages incurred as a result of information on this drawing.

TACO DRIVE THRU		
SCALE: 3/8"=1'-0"	APPROVED BY:	DRAWN BY: GXB
DATE:	For:	REVISION
ELEVATIONS		
E & C Consulting (541) 408-8626		DRAWING NUMBER 6 of 7