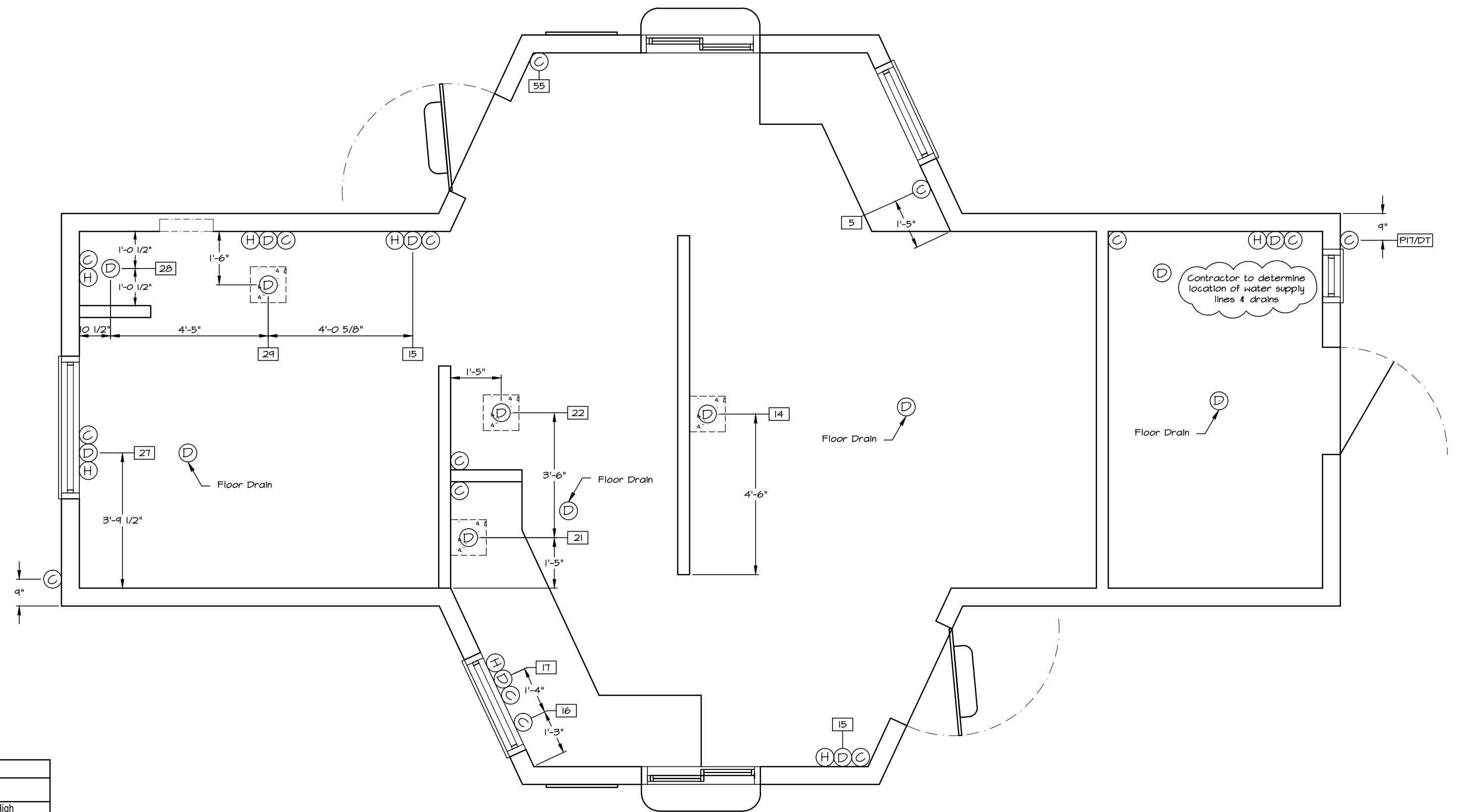


General Notes:

- Contact local water conditioning company to determine filtration/treatment necessary for the following pieces of equipment:
 - * espresso machine
 - * drip coffee brewer
 - * ice cube maker
 It may be advantageous to run a second cold water line, via filtration/treatment, to the above mentioned pieces of equipment.
- All equipment calling for drainage to a porcelain floor sink should have its drain line terminate 2" above the rim of that sink.
- Plumber shall follow all applicable codes and provide all necessary vents, clean outs, back flow check valves, etc.

- Ⓢ - cold water supply
- Ⓜ - hot water supply
- Ⓣ - drain
- ⓈⓂⓉ - porcelain sink



PLUMBING				
ID #	DESCRIPTION	MANUFACTURER	PROVIDE	NOTES
5	Twin Drip Coffee Air-Pot Brewer	Fetco, CBS-2042e	Filtered Cold Water	Stub In @ 24" High
14	Steam Table / Food Warmer	Supreme Metal, Triumph-SW-3E-120	Drain	Drain To Floor Sink
15	Hand Sink, wall mount	Advance Tabco, 7-PS-EC-X	Hot, Cold Water & Drain	Stub In @ 24" High
16	3 Gallon Iced Tea Brewer	Bunn, TB3	Filtered Cold Water	Stub In @ 24" High
17	Drop-In Sink	Advance Tabco, DI-1-10	Hot, Cold Water & Drain	Stub In @ 24" High
21	Soft Drink Dispenser Drop-in 4 Core	Manitowoc, CF-1522	Filtered Cold Water	Drain to Floor Sink
22	Ice Cube Maker w/ Holding Bin	Hoshizaki, KM-320MAH w/ B-300	Filtered Cold Water	Drain to Floor Sink
27	3 Compartment Ware Washing Sink 2 Drainboards & PreWash Sprayer	Regency, 600S31717218	Hot, Cold Water & Drain	Stub In @ 24" High
28	Floor Mop Sink, Floor	Advance Tabco, 9-OP-20	Hot, Cold Water & Drain	Stub In @ 24" High
29	Prep Table w/ sink	Advance Tabco KMS-244, Advance Tabco, TA-11J	Hot, Cold Water & Drain	Drain to Floor Sink
55	Water Filtration System		Cold Water	Supply Treated Water ONLY To: Coffee & Tea Brewers, Soft Drink & Ice Machine

GENERAL NOTES:

- IF BUREAUCRATIC CODES DIFFER FROM WHAT IS SHOWN ON THIS DRAWING, CODES SHALL TAKE PRECEDENCE.
- WHERE EVER WALL MOUNTED SHELVES ARE TO BE ATTACHED TO WALLS, A 3/4" PIECE OF PLYWOOD OR OSB SHOULD BE INSET INTO WALL STUDS UNDER THE FINISHED WALL SURFACE TO PROVIDE SECURE ANCHOR FOR SHELF MOUNTING. INSET PLYWOOD OR OSB SHOULD BE 24" WIDE, WITH 4" EXTENDING ABOVE THE INDICATED HEIGHT OF SHELF MOUNT, AND THE REMAINING 20" BELOW THAT HEIGHT. LENGTH OF INSET SHOULD EXTEND 6" BEYOND EACH END OF THE SHELF. BE AWARE THAT THESE SHELVES MAY CARRY SIGNIFICANT WEIGHT. PROJECT ARCHITECT TO MAKE ALL DECISIONS RELATED TO:
 - GENERAL AREA LIGHTING
 - HVAC
 - LIGHTED SIGNS
 - GENERAL PURPOSE CONVENIENCE OUTLETS
 - BATHROOM FIXTURES
 - BUILDING CONSTRUCTION SPECIFICATIONS, MATERIALS, ETC.
- ALL EQUIPMENT & FIXTURE DIMENSIONS, ELECTRICAL SPECIFICATIONS, AND PLUMBING SPECIFICATIONS ARE BASED UPON THE EQUIPMENT SPECIFIED ON THESE DRAWINGS. IF EQUIPMENT MAKES/MODELS CHANGE, BE SURE TO ADJUST ACCORDINGLY ON ALL DRAWINGS.

Disclaimer

This drawing been created for the purpose of suggesting equipment placement to promote efficient operational flow. It may pass all codes & requirements for your local / state bureaucracies, however, the creator of this drawing cannot, and is not, guaranteeing that it will. Different cities / counties / states may have specific requirements which may not be addressed on this drawing. It is your responsibility to make sure that the features on this drawing are acceptable with your local bureaucracies before beginning construction. If codes require features different than what has been indicated on this drawing, codes shall take precedence over this drawing. This drawing is intended to be a rough planning guide for your architect &/or construction professional. Ed Arvidson shall be held harmless from any expenses / damages incurred as a result of information on this drawing.

TACO DRIVE THRU		
SCALE: 3/8"=1'-0"	APPROVED BY:	DRAWN BY: GXB
DATE:	For:	REVISION
PLUMBING		
E & C Consulting (541) 408-8626		DRAWING NUMBER 3 of 7